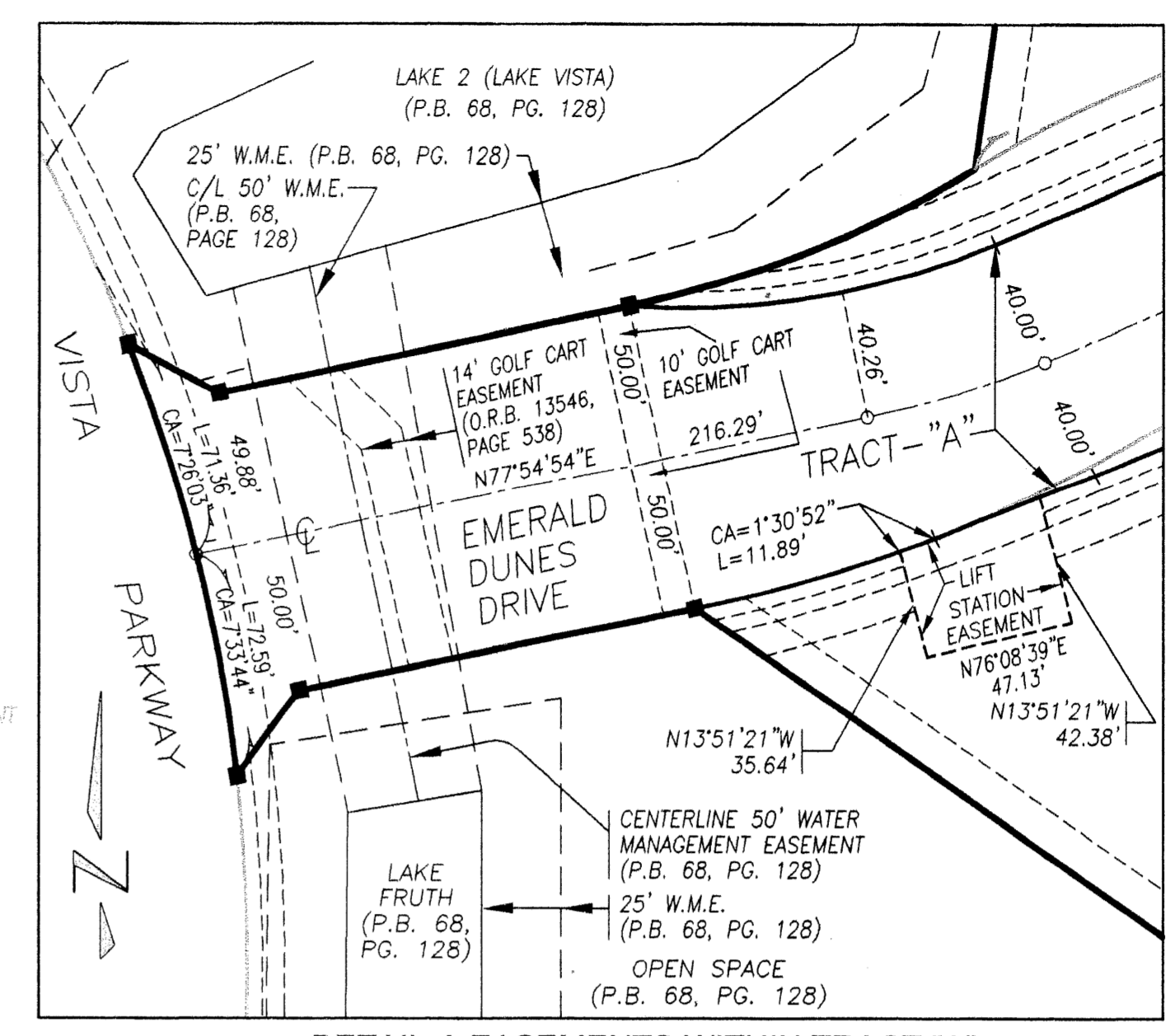
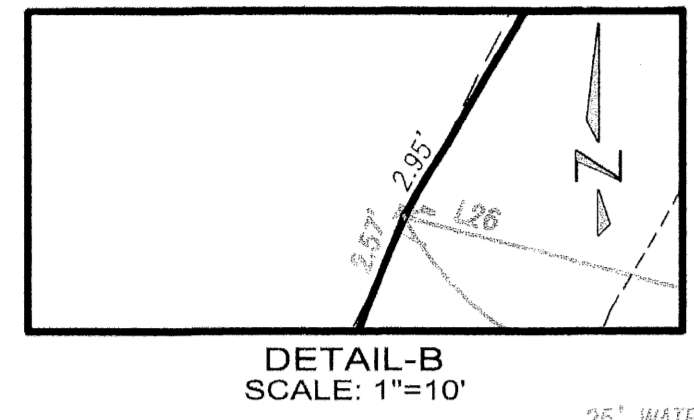
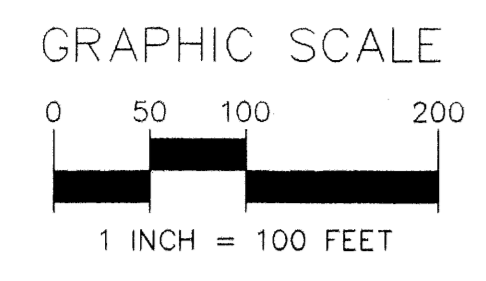


0473-008



**SYMBOLS LEGEND**

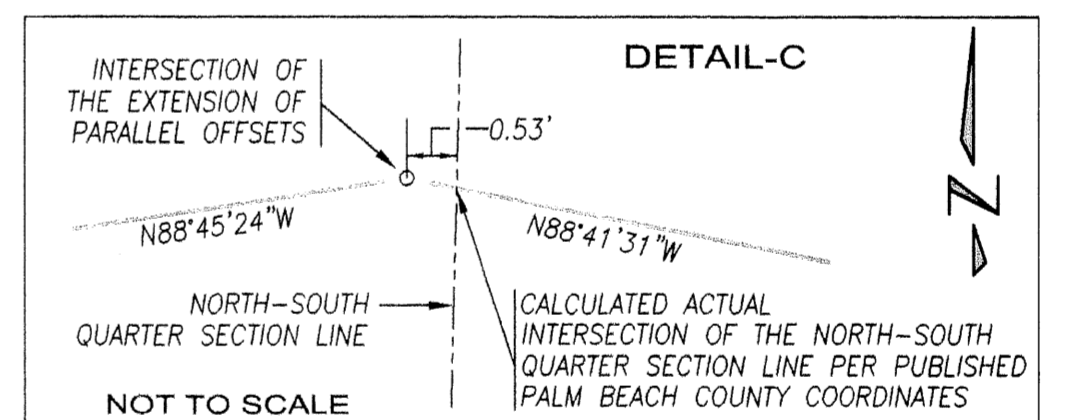
- SET PERMANENT REFERENCE MONUMENT (P.R.M.) "L.B.4897"
- SET PERMANENT CONTROL POINT (P.C.P.) "L.B.4897"
- NORTHERN PALM BEACH COUNTY IMPROVEMENT DISTRICT
- LIFT STATION EASEMENT
- R RADIUS
- CA CENTRAL ANGLE
- L ARC LENGTH
- CH CHORD DISTANCE
- CHB CHORD BEARING
- L.B.E. LANDSCAPE BUFFER EASEMENT
- C CENTERLINE
- P.O.B. POINT OF BEGINNING
- P.O.C. POINT OF COMMENCING
- P.B. PLAT BOOK
- PG.(S) PAGE(S)
- SQ.FT. SQUARE FEET
- W.M.E. WATER MANAGEMENT EASEMENT
- O.R.B. OFFICIAL RECORD BOOK
- EXT. EXTENSION
- U.E. UTILITY EASEMENT
- FPL FLORIDA POWER & LIGHT
- CHANGE OF DIRECTION
- PROFESSIONAL SURVEYOR AND MAPPER
- POINT OF CURVATURE
- ▲ PALM BEACH COUNTY BRASS DISK IN CONCRETE MONUMENT
- STATE PLANE NORTHING COORDINATE
- STATE PLANE EASTING COORDINATE

**LINE TABLE**

LINE	LENGTH	BEARING
L1	58.35'	S38°01'32"E
L2	172.48'	S38°01'32"E
L3	570.00'	S84°12'49"E
L4	129.40'	N40°09'04"E
L5	401.08'	N15°54'58"E
L6	279.65'	N02°10'09"W
L7	88.58'	N75°58'20"W
L8	230.83'	S38°01'32"E
L9	522.69'	S88°45'24"E
L10	455.77'	N00°23'13"W
L11	465.77'	S00°23'13"E
L12	163.73'	N14°08'05"E
L13	225.00'	N88°45'24"W
L14	158.00'	S22°04'13"W
L15	236.28'	S40°08'13"W
L16	58.31'	S14°52'44"W
L17	108.00'	N73°54'54"E
L18	100.00'	N16°05'06"W
L19	50.01'	N77°54'54"E
L20	101.02'	N73°46'37"E
L21	50.01'	N77°59'41"E
L22	101.13'	N14°27'18"W
L23	220.00'	N07°51'20"E
L24	117.17'	N49°34'58"E
L25	158.66'	N34°45'53"W
L26	89.57'	N74°46'11"W

**CURVE TABLE**

CURVE	LENGTH	RADIUS	DELTA	CHORD BEARING	CHORD LENGTH
C1	117.95'	350.00'	19°18'31"	S68°15'38"W	117.39'
C2	151.65'	450.00'	19°18'31"	N68°15'38"E	150.93'
C3	151.65'	450.00'	19°18'31"	S68°15'38"W	150.93'
C14	32.59'	550.00'	3°23'39"	N08°01'53"W	32.58'
C15	31.26'	550.00'	3°15'24"	N19°42'08"W	31.26'
C16	80.11'	550.00'	8°20'44"	N13°54'04"W	80.04'



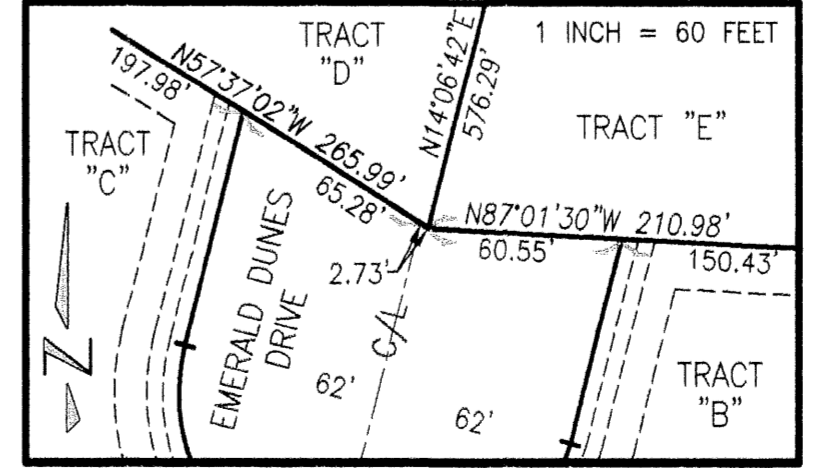
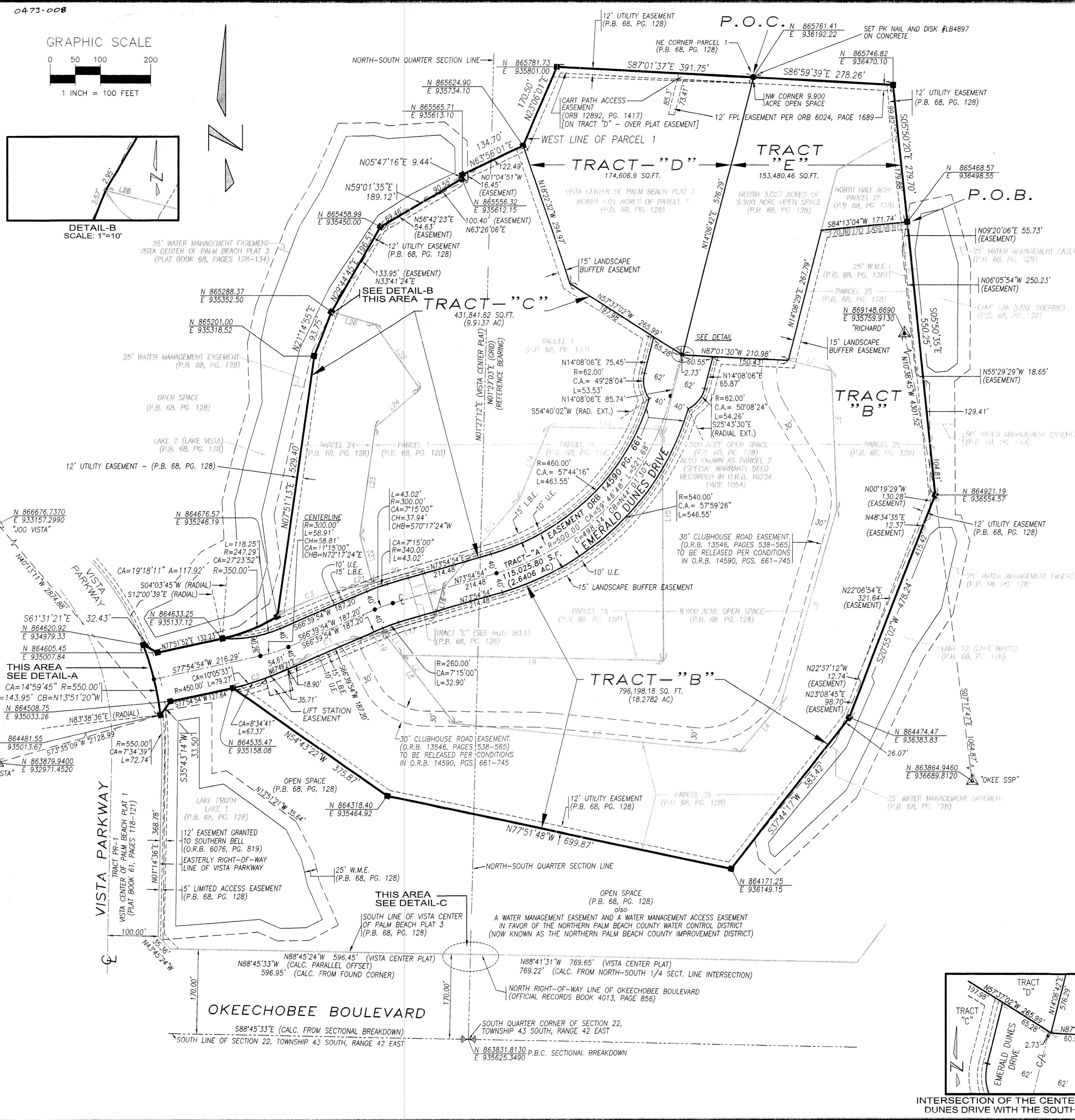
INTERSECTION OF THE NORTH RIGHT-OF-WAY LINES OF OKEECHOBEE BOULEVARD WITH THE NORTH-SOUTH 1/4 SECTION LINE

NOTES:  
 1). BEARINGS AND DISTANCES FROM PLAT CORNERS TO PALM BEACH COUNTY DESIGNATED "DENSIFICATION" HAVE BEEN OBTAINED BY MATHEMATICALLY INVERTING FROM A CALCULATED COORDINATE USING GROUND DISTANCES AND PLAT-REFERENCED BEARINGS TO COUNTY-PUBLISHED COORDINATES.  
 2). APPARENT DISCREPANCIES WITH ORIGINAL PLAT BEARINGS AND DISTANCES ARE DUE TO MATHEMATICAL CLOSURES USING ACTUAL FIELD MONUMENTATION. REFER TO BOUNDARY SURVEY FOR COMPARISONS.

# FAIRFIELD AT EMERALD DUNES

A PLANNED INDUSTRIAL PARK DEVELOPMENT  
 BEING A REPLAT OF TRACT "C", PARCELS 1, 1A, 24, 25, AND THE 9.900 ACRE OPEN SPACE, VISTA CENTER OF PALM BEACH PLAT 3, RECORDED IN PLAT BOOK 68, PAGES 128 THROUGH 134 OF THE PUBLIC RECORDS OF PALM BEACH COUNTY, FLORIDA, LYING IN THE SOUTH HALF OF SECTION 22, TOWNSHIP 43 SOUTH, RANGE 42 EAST, PALM BEACH COUNTY, FLORIDA  
 SHEET No.3 OF 3 MAY 2003

**Keshavarz & Associates, Inc.**  
 CONSULTING ENGINEERS - SURVEYORS  
 711 N. Dixie Highway, Suite 201  
 West Palm Beach, Florida 33401  
 Tel: (561) 689-8600 Fax: (561) 689-7476 LB 4897  
 THIS INSTRUMENT WAS PREPARED BY MANUEL A. GUTIERREZ, PSM.  
 PROFESSIONAL SURVEYOR AND MAPPER NO. 4102.  
 IN THE OFFICES OF KESHAVARZ & ASSOCIATES, INC.



INTERSECTION OF THE CENTERLINE OF EMERALD DUNES DRIVE WITH THE SOUTH LINE OF TRACT "D"

SUBDIVISION FAIRFIELD AT EMERALD DUNES  
 BOOK 97 PAGE 142  
 FLOOD ZONE B  
 QUAD # 31  
 SE  
 TAZ # 71  
 FUD NAME VISTA CENTER